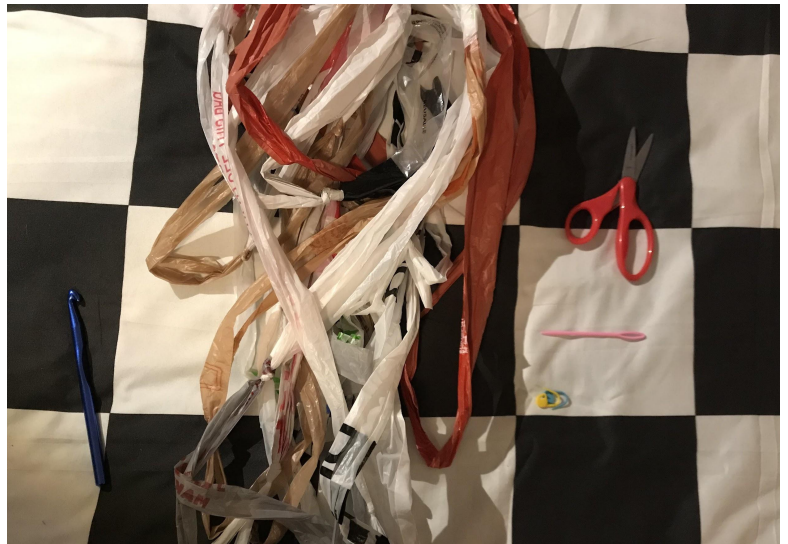


# Plarn Bag Crochet Instructions

## Necessary materials:

- Crochet hook, size 9
- Plarn. Lots of plarn.
- Scissors
- Large Needle (optional, for weaving in ends)
- Stitch markers (optional, paperclips work too)
  - Stitch markers can be useful for differentiating between different rows and keeping track of how many rows you have completed



## Step 1

Start by making a magic circle. If you don't know how to make one, a video tutorial is linked on the website. Crochet 6 single crochets into the magic circle.



## Step 2

Crochet a row of 6 increases into the stitches of the magic circle. If you do not know the increase stitch, a video tutorial is linked on the website.



## Step 3

Crochet a row of stitches with an alternating pattern of single crochets and increases, so 1 single, 1 increase, 1 single, 1 increase.



#### Step 4

Crochet a row of stitches with an alternating pattern of 2 single crochets for every 1 increase, so 2 singles, 1 increase, 2 singles, 1 increase.



#### Step 5

Crochet a row of stitches with an alternating pattern of 3 single crochets for every 1 increase, so 3 singles, 1 increase, 3 singles, 1 increase.



#### Step 6

Single crochet around the whole row.

#### Step 7

Single crochet in the back of the stitch only for a row.



#### Step 8

Single crochet 3 rows.





### Step 9

Single crochet for 5 stitches, then chain 4 and count three stitches down. Attach the end of the chain into the 4th stitch down and then single crochet for the rest of the row.



### Step 10

Single crochet for 11 more rounds.



### Step 11

Once you have completed 11 rows of single crochets, you will start decreasing on the next row. If you do not know the decrease stitch, a video tutorial is linked on the website.

Decrease once and then single crochet 3 stitches. Repeat this pattern for the rest of the row.

### Step 12

Single crochet around the whole row.

### Step 13

Decrease once and then single crochet 2 stitches.  
Repeat this pattern for the rest of the row.

### Step 14

Leave about 2 feet of extra plarn on the end of the current strand and cut off the rest.  
Make the pull string top by weaving the extra plarn between the stitches of the top row of the bag.



### Step 15

To make the handle of the bag, chain 40 and then tie off, leaving a couple inches of plarn loose at either end of the chain. To attach the handle, tie the extra lengths of plarn onto both sides of the top of the bag. Then, use a quilt needle or your crochet hook to weave the extra plarn on both ends down along the sides of the bag to make it more secure.

Make sure the hole in the side of the bag is accessible in the front when the bag is hanging.

### Step 16

Hang your beehive bag somewhere and fill it up with plastic bags that you plan to re use! You can pull bags out of the hole in the side of the beehive bag like a dispenser. Good luck!

